



**THOMAS**  
SIGN & AWNING COMPANY, INC



**THOMAS SIGN AND AWNING COMPANY, INC.**  
*Leader in Identification and Signage Solutions*



75 ft "Welcome to St. Petersburg" tower, manufactured and installed by Thomas Sign is located at I-275 and Howard Frankland Bridge, St. Petersburg, Florida.

# ABOUT US

Thomas Sign and Awning Company, Inc. is a leading manufacturer of corporate identity of all types, sizes and shapes for clients locally, regionally and nationally since 1969.

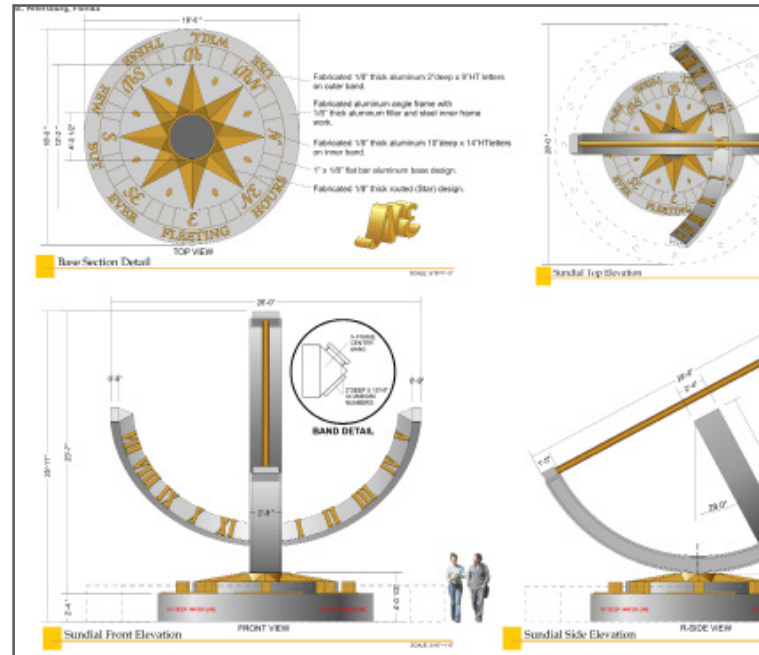
Located on 10 acres in Clearwater, Florida, our 100,000 square foot manufacturing facility is outfitted with the latest equipment for designing and manufacturing identity solutions. A fully automated plant gives Thomas Sign the ability to produce a consistent quality product while generating higher levels of productivity.

All administration, sales, design, manufacturing and project management departments are located together, enabling Thomas Sign to maintain strict control of each project. The status of every order is continuously monitored, along with implementation of quality control, assuring that all project milestones are successfully met.



## DESIGN

## PROTOTYPING



# BRANDING SPECIALISTS

At Thomas Sign we create brands that get your business noticed. You can be assured that our attention to detail and unparalleled quality is present in every sign we craft. At Thomas Sign, we want our customers to be as excited and proud of their finished product as we are, and we strive towards that goal every day. Brand identity is more than a process, it's an art, and we guarantee to provide our clients with the Thomas "Sign of Success."



## MANUFACTURING

## INSTALLATION



Signs of the Times magazine Readers' Choice Award Winner

# THOMAS PRODUCTS

Thomas Sign has a proven track record that can be substantiated by our ability to create, manufacture, and install signs for any industry segment. Whether you are looking for a unique one-of-a-kind sign or your business calls for mass produced signs for multiple locations throughout the United States, Canada or Puerto Rico, Thomas Sign has the experience to handle every step of your identity program.

## EXTERIOR & INTERIOR SIGN PRODUCTS

- |                        |                        |
|------------------------|------------------------|
| Awnings                | Electronic Displays    |
| Architectural Elements | LED Technology         |
| Architectural Signage  | LED Retro-Fit Program  |
| ATM Signage            | Light Displays         |
| Banners                | Monument Signs         |
| Canopies               | Neon & Luminous Tubing |
| Channel Letters        | Pylon Signs            |
| Digital Graphics       | Vinyl Graphics         |
| Directional Signage    | Wall Signs             |



Tenant Signs



The SUNDIAL



Architectural Towers



Unique ATMs



# ST. PETERSBURG, FLORIDA SUNDIAL

Thomas Sign was selected to design, manufacture and install the complete signage system that would guide visitors throughout the Sundial entertainment complex. The sign package included unique architectural elements, wayfinding, ATMs and the center's namesake, "SUNDIAL".

The nearly three-story, 29-foot tall, fully operational bowstring sundial is one of the largest ever created, and certified by the North American Sundial Society, and has become the city's newest landmark, welcoming Floridians, visitors, guests and tourists.

*The "SUNDIAL" is certified by the North American Sundial Society as the largest bowstring sundial in the world*



Paseo Signs



# LEGOLAND FL

Thomas Sign had the unique opportunity to work with LEGOLAND Florida. This large theme park signage presented unique challenges due to the one-of-a-kind signs, ornate faces, and multi-color requirements. Our talented design team, working closely with park architects, designed signs that thrill kids and adults alike. Our skilled fabricators and painters brought the park's concepts to life and our in-house installation team managed every detail to ensure every sign was installed as planned.



## SIGN SOLUTIONS

Wide-format digital printing is a creative way to promote your message. Thomas Sign uses a high-definition, wide-format digital printer that has no boundaries on creating options for practically any surface type. Our experienced digital staff will work with you to unveil the unlimited applications and endless possibilities that are available to you through digital printing.



This impressive factory sign is 10'-2" tall and 19'-11" long

# EMC DISPLAYS

Electronic Message Centers are a great way to get your message out and create customer interest. And, with so many options to choose from, Thomas Sign offers consulting services to ensure your concepts are brought to life at a price point that meets your budget.



## ACCENT CANOPIES & AWNINGS

Awnings and canopies are attractive ways to enhance your location and are inviting to customers. Thomas Sign made their first awning in 1972, and today, awnings and canopies are part of our primary manufacturing process. Our designers will make sure that your designs are architecturally pleasing, safety compliant and meet all municipality codes.



USF Campus Sports Venue, two - 15' x 144' structured canopies

# SIGNAGE SYSTEMS

Our experienced sales teams work directly with architects, developers, general contractors and business owners to get you everything you need to plan your signage projects. Thomas Sign has a vast amount of experience in the delivery of commercial signs and awnings from large projects, such as hospitals and retail malls, to small single commercial locations.



Over the years, Thomas Sign has participated in hundreds of projects. Below is a sample:

- Adventist Healthcare
- Baycare Health Systems
- Clearwater's Centennial Gateway
- Coralwood Center
- Florida Hospital
- Marketplace at Altamonte
- Peak 10
- Pinellas Park Municipality
- St. Anthony's Hospital
- St. Petersburg Welcome Tower
- Sundial Center
- Tampa International Airport
- Tampa Port Authority
- The Groves
- The Loop West
- Trinity College
- USF Sports Venues
- Westfield Malls



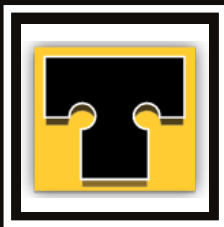
# News Release

## TAMPA BAY NEWSWIRE

TAMPABAYNEWSWIRE — Thomas Sign and Awning has done it again. The company recently designed, manufactured and installed another tower sign that is sure to become a Pinellas County landmark.

The inspiration for the new tower comes from the city's 1924 "Come to Clearwater" pillars that guided visitors to the ferry. The photo was provided to Thomas Sign and the nearly 50-foot tall tower was designed. Today's tower is fully lit by LED illumination and an RGB lighting system. The tower's synthetic stucco finish is topped by a large orb that will change from white to yellow as dusk falls, representing the Florida sun. The base of the tower acknowledges the city's centennial logo and the year the city was founded, "1915" on two sides.

The nearly 50-foot tower welcoming passersby to Clearwater is located at the western end of the Courtney Campbell Causeway, Clearwater, Florida.



Thomas Sign & Awning Co., Inc.  
4590 118th Ave N  
Clearwater, FL 33762

Ph. 800.526.3325  
email: [info@thomassign.com](mailto:info@thomassign.com)

Contractor Licenses: ES0000083, CGCo43353



[www.facebook.com/ThomasSignAwningCompanyInc](http://www.facebook.com/ThomasSignAwningCompanyInc)



[www.linkedin.com/company/Thomas-Sign-&-Awning](http://www.linkedin.com/company/Thomas-Sign-&-Awning)



[www.pinterest.com/ThomasSign](http://www.pinterest.com/ThomasSign)

[www.ThomasSign.com](http://www.ThomasSign.com)

